



Wednesday September 17, 2025

Driving Growth and Scale Through Video

Produced by:

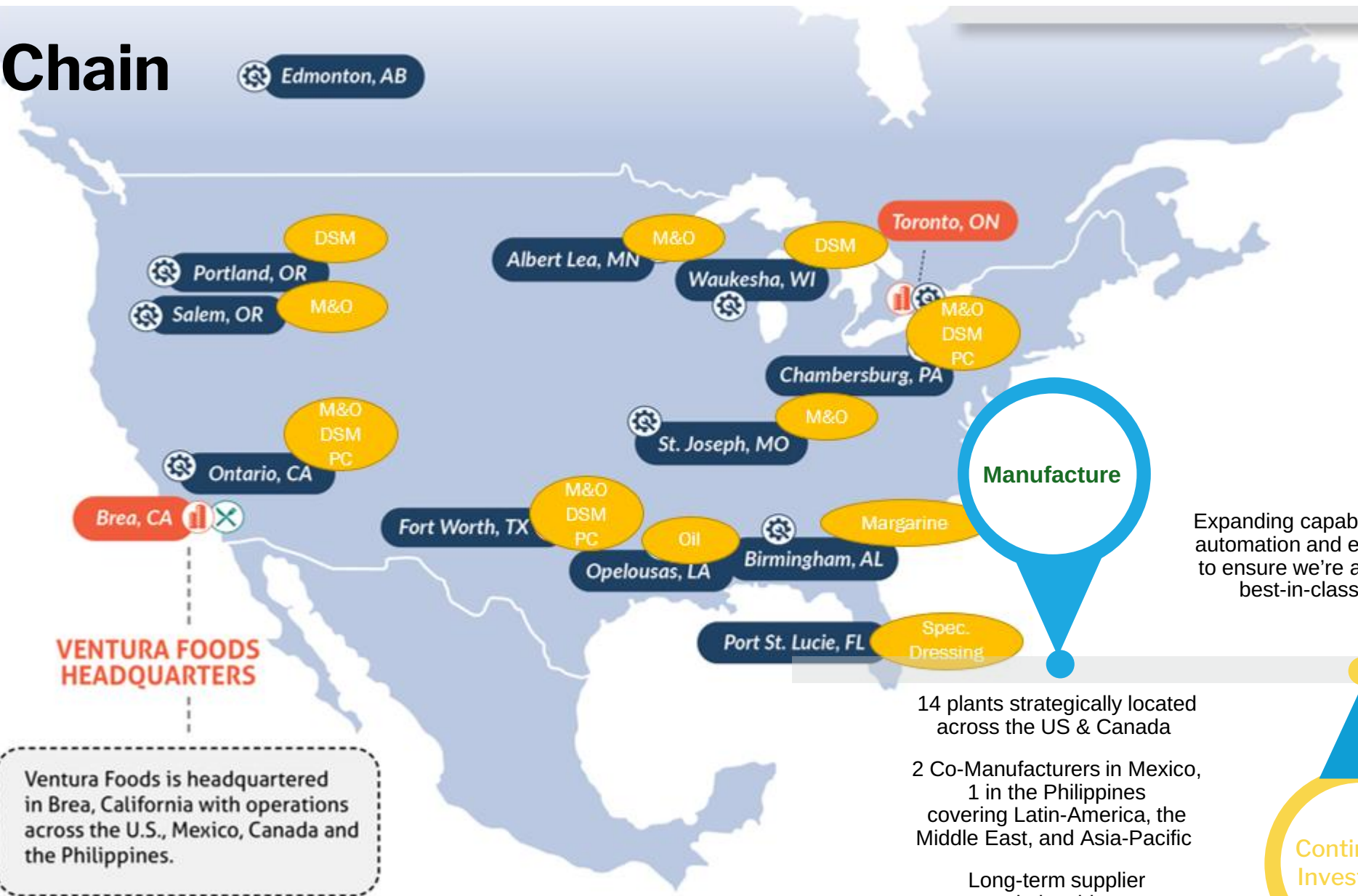


Sponsored by:



Our Footprint Contributes To Our Advantaged Supply Chain

Chain



Manufacture

Expanding capabilities, increasing automation and enhancing quality to ensure we're always offering a best-in-class experience

Plant Capabilities

Diverse product category portfolio solving needs across your operation

30 packaging types, single serve to bulk helping you find the right product for your customers

Continuous Investment

14 plants strategically located across the US & Canada

2 Co-Manufacturers in Mexico, 1 in the Philippines covering Latin-America, the Middle East, and Asia-Pacific

Long-term supplier relationships

Ventura Foods is headquartered in Brea, California with operations across the U.S., Mexico, Canada and the Philippines.

Title	Opening Hot Sauce Barrels				OPL#		
Type	<input checked="" type="checkbox"/> Safety	<input checked="" type="checkbox"/> Knowledge	<input checked="" type="checkbox"/> Improvement	<input type="checkbox"/> Trouble Shooting	Date Created 1/30/20	Revision 0	
Location / Area			Who Needs to be Trained All employees		Created By		
PERSONAL PROTECTIVE EQUIPMENT REQUIRED							
<input checked="" type="checkbox"/> 	<input type="checkbox"/> 	<input type="checkbox"/> 	<input type="checkbox"/> 	<input type="checkbox"/> 	<input type="checkbox"/> 	<input type="checkbox"/> 	<input type="checkbox"/> OTHER: _____



*We must treat our ingredients with care. This includes protecting them from contamination and opening packaging in such a way that it does not become a contaminant.

*The following method addresses these concerns when dealing with hot sauce in cardboard barrels by leaving the lid in place, safely removing the bung seal in one piece, removing the bung plug, and inserting the pump probe into the bung.

1. Using a slotted screw driver, as pictured above, place the tip of the driver under the metal seal collar. Place other hand on the the seal. Using the ring ridge in the lid as a fulcrum, press down on the handle of the driver to pry the seal off in one piece.
2. Retain the seal with the non-prying hand, and place in the trash can.
3. Insert the knobs on the side of the bung wrench into the slots in the plug and turn counterclockwise to loosen the plug. After one turn with the bung wrench the plug should turn easily by hand. Once removed, place the plug on top of the lid until the barrel is empty.
4. Insert pump probe into the bung and begin pumping.

The slotted screw driver and the bung wrench will be kept in the production office when not running products requiring the Buffalo sauce from the barrels. Operators will be issued these tools before the product starts running and must turn them over to their replacement at shift change or return them to the shift supervisor on duty when the product run is finished.

* Do not remove the entire lid. Doing so unnecessarily exposes the ingredients to possible contamination.

* Do not attempt to cut the bung seal off with a knife or use a knife to pry the seal off. Cutting the seal introduces the possibility of shards or shavings from the seal falling into the product.

Immediate Manager/Supervisor Date

Other applicable approvals

Date